



Handle of excellence.

DOOR HANDLES

dallas | atlanta | verona | new orleans

- Door handle sets for residential and commercial applications
- Optional Thumb locks and cylinder locks sold separately
- Made in Germany
- Tested to European standards
- Quick-Fit technology for an easy assembly
- For 1-3/8" or 1-3/4" thick doors
- Available finishes: Black Matte and Satin Nickel
- Other finishes are available upon request
- Limited life-time warranty
- Works with CEAM magnetic locks



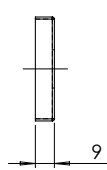
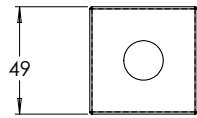
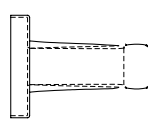
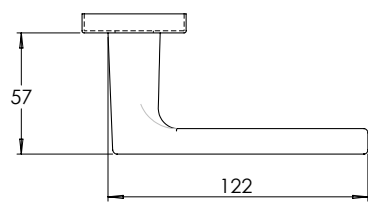
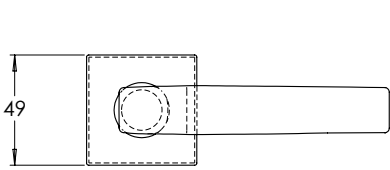
DALLAS

For 1-3/8" or 1-3/4" Thick Doors

Set Includes

- (2) Dallas Quick-Fit handles
- (2) Square Rosettes
- (1) Spindle for 1-3/8" Thick Doors or
- (1) Spindle for 1-3/4" Thick Doors

Item No.	Description	Door Thickness	Color
H1510-35-BLK	Dallas Handle Set for Passage (Non-Locking)	1-3/8"	Matte Black
H1510-35-SNI	Dallas Handle Set for Passage (Non-Locking)	1-3/8"	Satin Nickel
H1510-45-BLK	Dallas Handle Set for Passage (Non-Locking)	1-3/4"	Matte Black
H1510-45-SNI	Dallas Handle Set for Passage (Non-Locking)	1-3/4"	Satin Nickel



Optional Thumb-Lock Kits

Item No.	Description	Door Thickness	Color
H1610-3545-BLK	Privacy Lock Kit with Square Rosettes	1-3/8" or 1-3/4"	Matte Black
H1610-3545-SNI	Privacy Lock Kit with Square Rosettes	1-3/8" or 1-3/4"	Satin Nickel



AVAILABLE NOW
1-800-222-6941

e. orders@petermeier.com
w. petermeier.com
a. 1255 South Park Dr.
Kernersville, NC 27284, USA



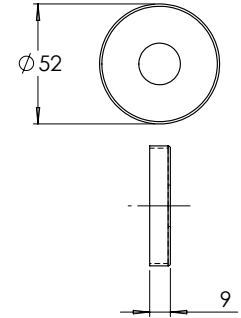
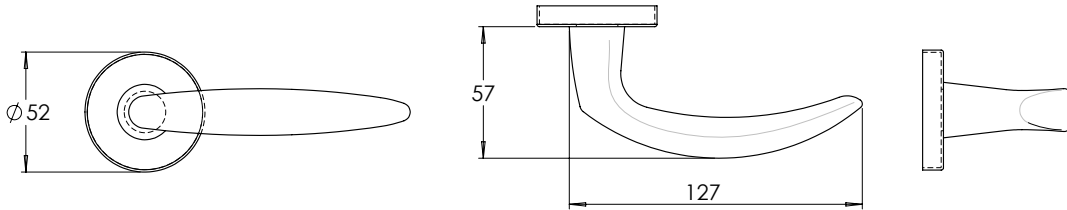
ATLANTA

For 1-3/8" or 1-3/4" Thick Doors

Set Includes

- (2) Atlanta Quick-Fit handles
- (2) Round Rosettes
- (1) Spindle for 1-3/8" Thick Doors or
- (1) Spindle for 1-3/4" Thick Doors

Item No.	Description	Door Thickness	Color
H1511-35-BLK	Atlanta Handle Set for Passage (Non-Locking)	1-3/8"	Matte Black
H1511-35-SNI	Atlanta Handle Set for Passage (Non-Locking)	1-3/8"	Satin Nickel
H1511-45-BLK	Atlanta Handle Set for Passage (Non-Locking)	1-3/4"	Matte Black
H1511-45-SNI	Atlanta Handle Set for Passage (Non-Locking)	1-3/4"	Satin Nickel



Optional Thumb-Lock Kits

Item No.	Description	Door Thickness	Color
H1611-3545-BLK	Privacy Lock Kit with Round Rosettes	1-3/8" or 1-3/4"	Matte Black
H1611-3545-SNI	Privacy Lock Kit with Round Rosettes	1-3/8" or 1-3/4"	Satin Nickel

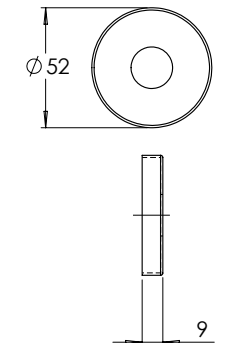
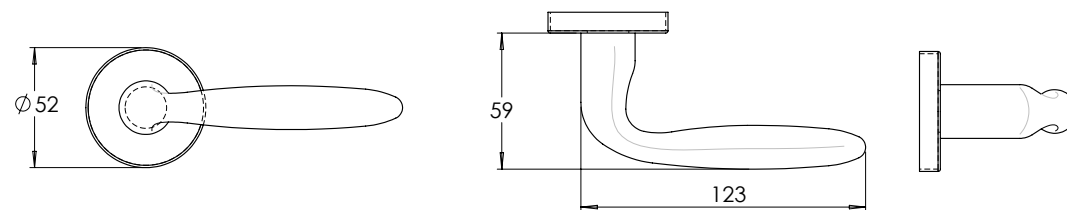
VERONA

For 1-3/8" or 1-3/4" Thick Doors

Set Includes

- (2) Verona Quick-Fit handles
- (2) Round Rosettes
- (1) Spindle for 1-3/8" Thick Doors or
- (1) Spindle for 1-3/4" Thick Doors

Item No.	Description	Door Thickness	Color
H1512-35-BLK	Verona Handle Set for Passage (Non-Locking)	1-3/8"	Matte Black
H1512-35-SNI	Verona Handle Set for Passage (Non-Locking)	1-3/8"	Satin Nickel
H1512-45-BLK	Verona Handle Set for Passage (Non-Locking)	1-3/4"	Matte Black
H1512-45-SNI	Verona Handle Set for Passage (Non-Locking)	1-3/4"	Satin Nickel



Optional Thumb-Lock Kits

Item No.	Description	Door Thickness	Color
H1611-3545-BLK	Privacy Lock Kit with Round Rosettes	1-3/8" or 1-3/4"	Matte Black
H1611-3545-SNI	Privacy Lock Kit with Round Rosettes	1-3/8" or 1-3/4"	Satin Nickel

NEW ORLEANS

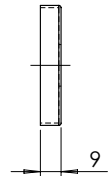
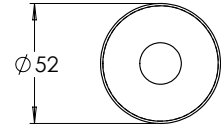
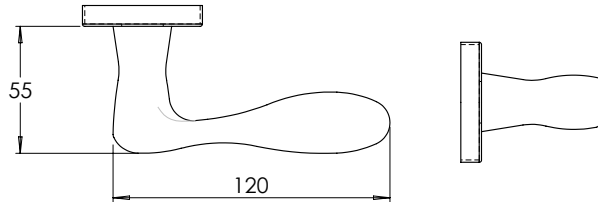
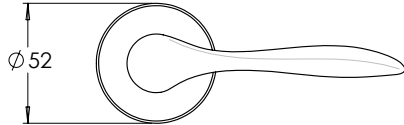
For 1-3/8" or 1-3/4" Thick Doors

Set Includes

- (1) New Orleans Quick-Fit handle (Left)
- (1) New Orleans Quick-Fit handle (Right)
- (2) Round Rosettes
- (1) Spindle for 1-3/8" Thick Doors or
- (1) Spindle for 1-3/4" Thick Doors



Item No.	Description	Door Thickness	Color
H1513-35-BLK	New Orleans Handle Set for Passage (Non-Locking)	1-3/8"	Matte Black
H1513-35-SNI	New Orleans Handle Set for Passage (Non-Locking)	1-3/8"	Satin Nickel
H1513-45-BLK	New Orleans Handle Set for Passage (Non-Locking)	1-3/4"	Matte Black
H1513-45-SNI	New Orleans Handle Set for Passage (Non-Locking)	1-3/4"	Satin Nickel



Optional Thumb-Lock Kits

Item No.	Description	Door Thickness	Color
H1611-3545-BLK	Privacy Lock Kit with Round Rosettes	1-3/8" or 1-3/4"	Matte Black
H1611-3545-SNI	Privacy Lock Kit with Round Rosettes	1-3/8" or 1-3/4"	Satin Nickel



CYLINDER LOCK KITS

With square or round escutcheons

Kit Includes

- (1) Locking Cylinder
- (2) Keys
- (2) Square or Round Escutcheons

Item No.	Description	Keyway	Turn	Door Thickness	Color
H1710-45-BLK	Cylinder Locking Kit with Square Escutcheons	Schlage C	360 °	1-3/4"	Matte Black
H1710-45-SNI	Cylinder Locking Kit with Square Escutcheons	Schlage C	360 °	1-3/4"	Satin Nickel



Item No.	Description	Keyway	Turn	Door Thickness	Color
H1711-45-BLK	Cylinder Locking Kit with Round Escutcheons	Schlage C	360 °	1-3/4"	Matte Black
H1711-45-SNI	Cylinder Locking Kit with Round Escutcheons	Schlage C	360 °	1-3/4"	Satin Nickel



WORKS WITH Magnetic Locks

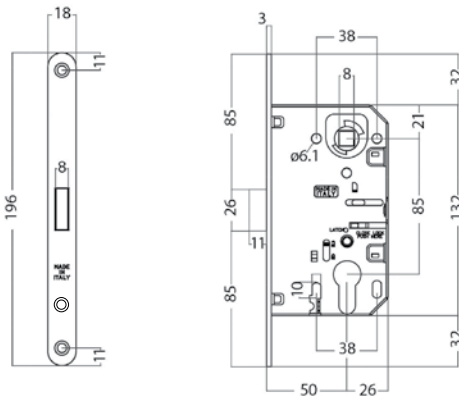
Cylinder & Passage/Bathroom Magnetic Door Locks

ML50-CY Cylinder Magnetic Locks

Includes

- (1) Magnetic Lock
- (1) Matching Strike Plate

Item No.	Description	Setback	Color
ML50-CY-BLK	Cylinder Magnetic Lock	50mm	Matte Black Paint
ML50-CY-SNK	Cylinder Magnetic Lock	50mm	Satin Nickel Stainless
ML50-CY-NK	Cylinder Magnetic Lock	50mm	Polished Nickel Plated
ML50-CY-MCH	Cylinder Magnetic Lock	50mm	Satin Matte Chrome Plated
ML50-CY-BR	Cylinder Magnetic Lock	50mm	Polished Brass



Strike Plates

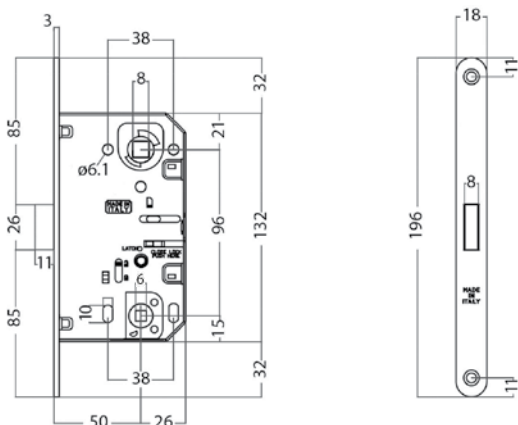


ML50-WC Passage and Bathroom Magnetic Locks

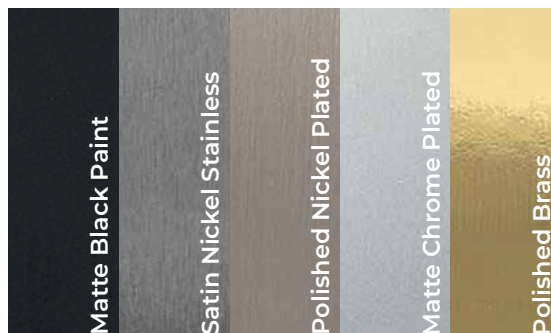
Includes

- (1) Magnetic Lock
- (1) Matching Strike Plate

Item No.	Description	Setback	Color
ML50-WC-BLK	Passage and Bathroom Magnetic Lock	50mm	Matte Black Paint
ML50-WC-SNK	Passage and Bathroom Magnetic Lock	50mm	Satin Nickel Stainless
ML50-WC-NK	Passage and Bathroom Magnetic Lock	50mm	Polished Nickel Plated
ML50-WC-MCH	Passage and Bathroom Magnetic Lock	50mm	Satin Matte Chrome Plated
ML50-WC-BR	Passage and Bathroom Magnetic Lock	50mm	Polished Brass



Face Plate Colors



AVAILABLE NOW
1-800-222-6941

e. orders@petermeier.com
w. petermeier.com
a. 1255 South Park Dr.
Kernersville, NC 27284, USA

PMI-HOPPE24
OCT 2024 / Hoppe Door Handles / 11

