

HANGING SYSTEM





CAMAR®
the art of innovation

HANGING BRACKET

CAMAR® Hangers are made with you in mind. They feature a precision horizontal and vertical adjustment to ensure the cabinets are in the precise position.

CAMAR® Specializes in quality, offering their components in ABS plastic and steel.

Cover caps are available in various colors to hide the metal hardware on our hangers or the adjustability holes in our concealed brackets.

All of our hangers work with all of our hanging rails.

HANGERS AND RAILS

CONCEALED BRACKET

The **CAMAR®** concealed hanging bracket offers a clean look for your cabinet.

Precision horizontal and vertical adjustments are standard on our concealed hangers to make sure you always have a level result.

CAMAR® concealed hanging brackets are made out of steel for maximum durability.

BASE CABINET HANGER

Base cabinet hangers can help to modernize your living room, kitchen and bath.

The hangers and anti-drop wall plates are made out of steel and are both sturdy and easy to install.

TABLE OF CONTENTS

02

PRODUCT INFORMATION

04

HANGING BRACKETS

08

BASE CABINET HANGERS

09

CONCEALED BRACKETS

10

INVISIBLE SHELF SUPPORT

11

HANGING RAILS



Concealed Hanging Bracket

Page 8

CONTACT INFO

1255 South Park Dr.
Kernersville, NC 27284 USA
Tel. 336-996-7774
Fax 336-996-1812
Toll Free 800-222-6941
E-mail: info@petermeier.com
www.petermeier.com

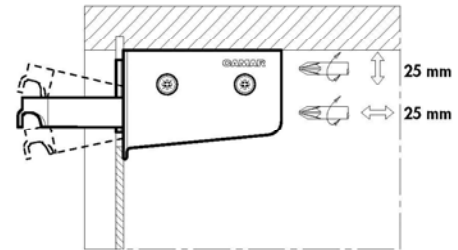
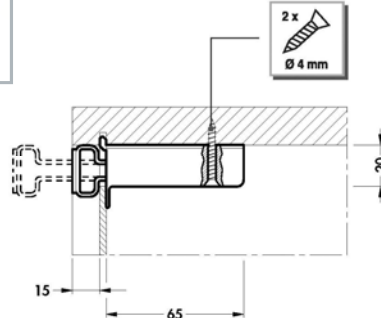
Hanging Bracket



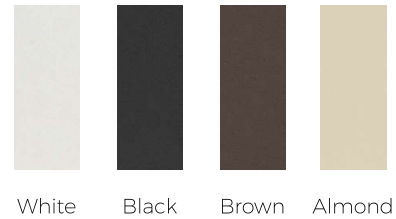
814 HANGING BRACKET

CAMAR

- Screw mount
- ABS casing with metal internal components
- 220 lbs. weight capacity per pair
- 100 per box
- Adjustment: $\leftarrow 25\text{ mm} \rightleftarrows$ $\updownarrow 25\text{ mm}$



Finish



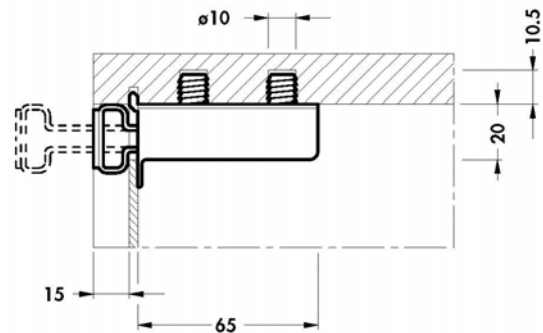
Description	Item Number (Left Mount)	Item Number (Right Mount)	Finish
814 Bracket, Screw Mount	814-01-SX	814-01-DX	White
814 Bracket, Screw Mount	814-02-SX	814-02-DX	Black
814 Bracket, Screw Mount	814-04-SX	814-04-DX	Dark Brown
814 Bracket, Screw Mount	814-55-SX	814-55-DX	Almond



822 HANGING BRACKET

CAMAR

- Dowel mount, 10mm
- 308 lbs. weight capacity per pair
- 100 per box
- Adjustment: $\leftarrow 25\text{ mm} \rightleftarrows$ $\updownarrow 25\text{ mm}$



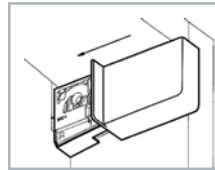
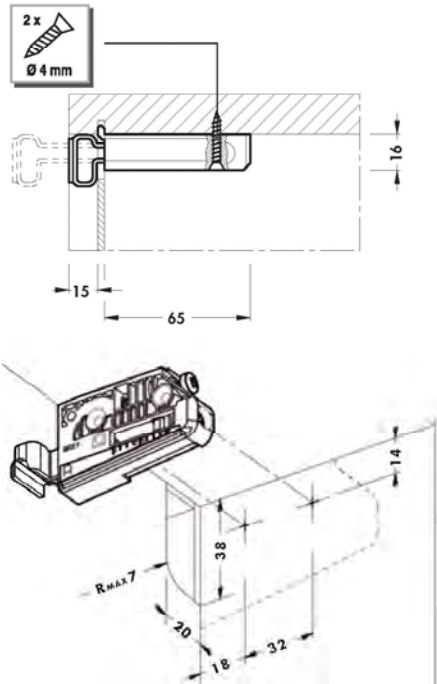
Description	Item Number (Left Mount)	Item Number (Right Mount)	Finish
822 Bracket, Dowel Mount	822-01-SX	822-01-DX	White

806 HANGING BRACKET

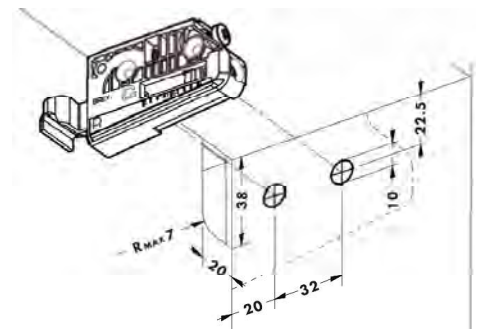
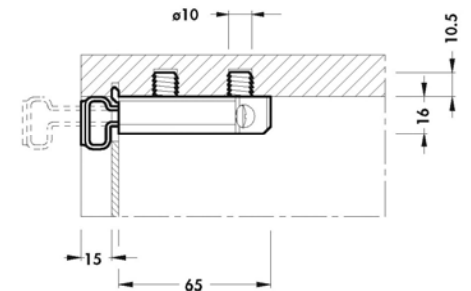
- Screw mount:
220 lbs. weight capacity per pair
- Dowel Mount:
280 lbs. weight capacity per pair
- 100 per box
- Adjustment: 25 mm \updownarrow 28 mm



Screw Mount



Dowel Mount



Cover Cap Colors



Description	Item Number (Left Mount)	Item Number (Right Mount)	Finish
806 Bracket Only, Screw	806-00-SX	806-00-DX	White
806 Bracket w/ White Cover, Screw	806-14-SX	806-14-DX	White
806 Bracket Only, Dowel	806-P2-SX	806-P2-DX	White
806 Bracket w/ White Cover, Dowel	806-22-SX	806-22-DX	White
806 Dowel Bracket Only w/o Lip	806-P2-SL	806-P2-DL	White
Cover Cap	806-01-SX	806-01-DX	White
Cover Cap	806-02-SX	806-02-DX	Black
Cover Cap	806-04-SX	806-04-DX	Brown
Cover Cap	806-32-SX	806-32-DX	Candle light
Cover Cap	806-55-SX	806-55-DX	Almond
Cover Cap	806-NS-SX	806-NS-DX	Brushed Nickel

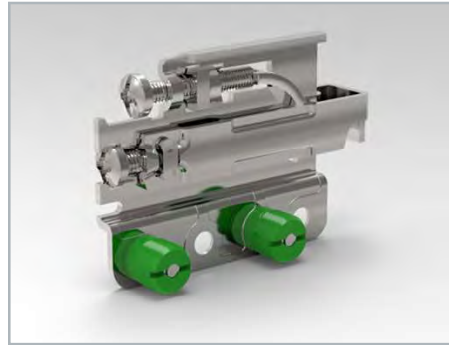
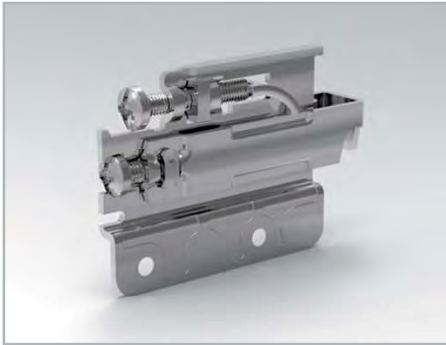
Hanging Bracket



704 METAL WALL HANGER

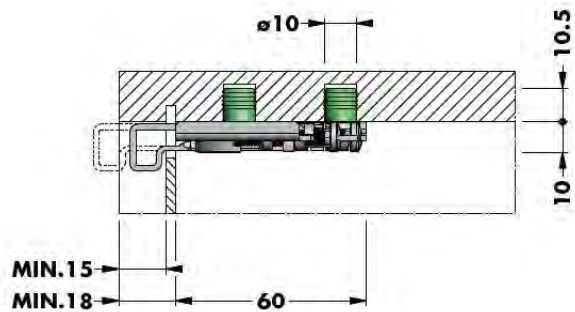
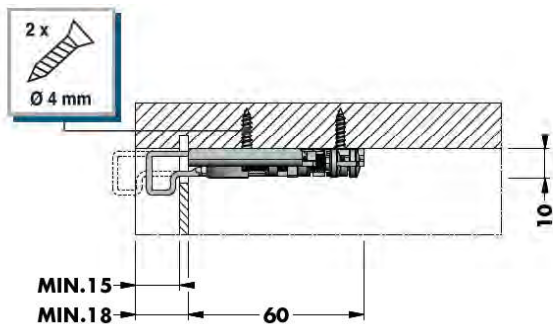
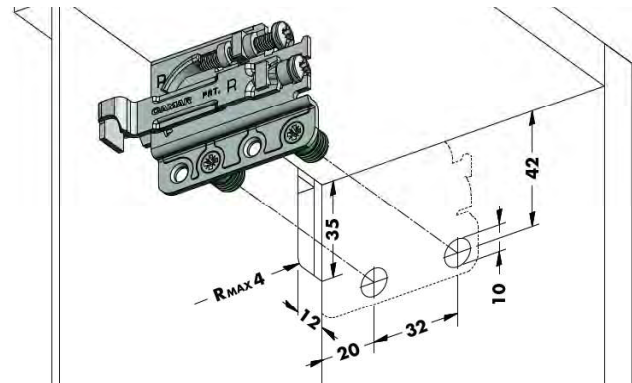
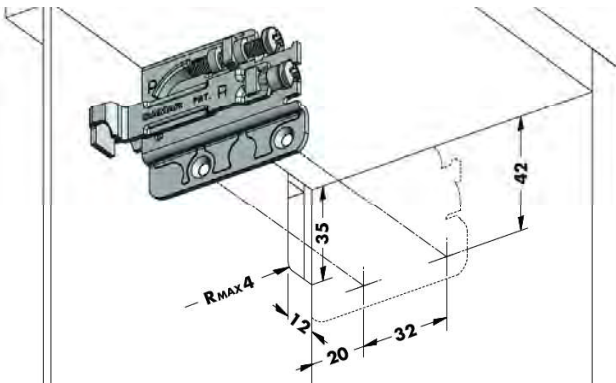
CAMAR

- Slim steel nickel plated design.
- 180 lbs. weight capacity per pair (Screw)
- For #8 (4.1mm) flat head screw mount
- 340 lbs. weight capacity per pair (Dowel)
- 10mm Dowel mount
- Optional cover caps available
- 200 per Box
- Adjustment: 



Screw Mount


Dowel Mount

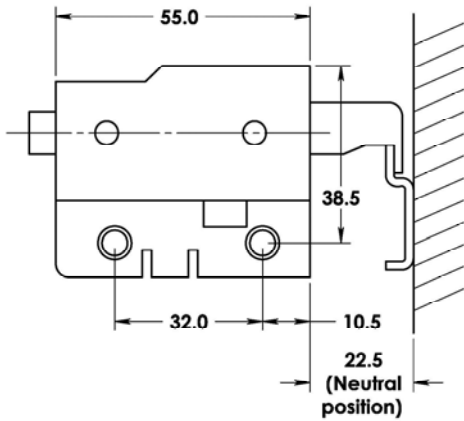


Description	Item Number (Left Mount)	Item Number (Right Mount)	Finish
704 Metal Wall Hanger, Screw	704-VI-SX	704-VI-DX	Steel
704 Metal Wall Hanger, Dowel	704-IN-SX	704-IN-DX	Steel
Cover Cap	801-01-SX	801-01-DX	White

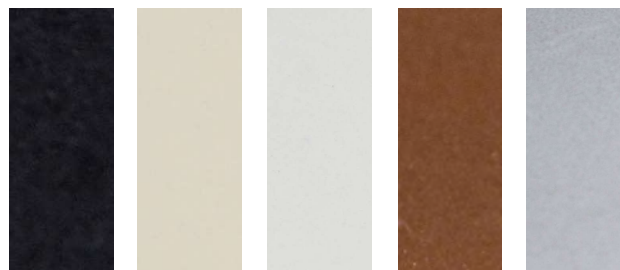


METAL HANGING BRACKET

- LGA and ENTELA tested
- Attaches with countersunk Euro-screws
- Optional ABS cover caps snap on quickly
- 180 lbs. weight capacity per pair
- 50 per box
- Adjustment: 



Cover Cap Colors



Black Almond White Lt. Brown Grey/Silver

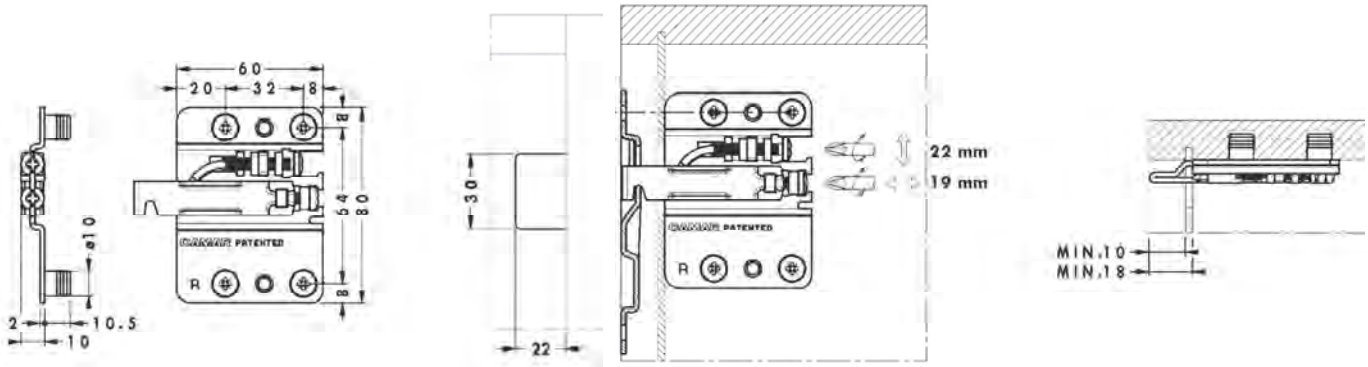
Description	Item Number (Left Mount)	Item Number (Right Mount)	Finish
Cabinet Metal Bracket	16.85450	16.85451	Zinc
Cover Cap	16.85252.002	16.85253.002	Black
Cover Cap	16.85252.101	16.85253.101	Almond
Cover Cap	16.85252.680	16.85253.680	White
Cover Cap	16.85252.801	16.85253.801	Light Brown
Cover Cap	16.85252.906	16.85253.906	Grey/Silver



807 BASE CABINET HANGER



- Dowel mount
- Easy slide cover caps
- Anti-drop wall plate size: 120mm x 120mm and 60mm x 70mm
- Insertion tool available
- *528 lbs. weight capacity per pair
- 100 per box
- Adjustment: 



Cover Cap



807-AS-Z1

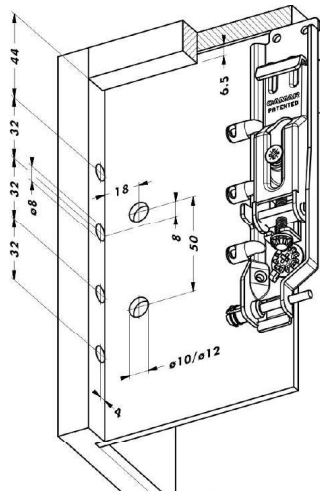


807-00-AP

Description	Item Number (Left Mount)	Item Number (Right Mount)	Finish
807 Hanging Bracket, Base Unit	807-Z1-SX	807-Z1-DX	Steel
Cover Cap	807-01-SX	807-01-DX	White
Cover Cap	807-02-SX	807-02-DX	Black
Anti-Drop Wall Plate, 120mm x 120mm	897-AS-Z2		Steel
Anti-Drop Wall Plate, 60mm x 70mm	897-AS-Z1		Steel
Special Insertion Tool	807-00-AP		n/a

*The load rating for the 807 Base Cabinet Hanger is 528 lbs. for each pair and is determined by the following factors:

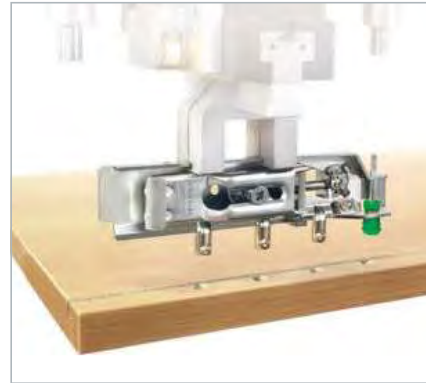
- Dimension and material of the cabinet. (L 47" H 24" D 23")
 - Position of the hanger to the top panel.
 - The position and thickness of the back panel and depth of the groove.
 - Dynamic Stress. (Motion of drawers or doors under action and force).
- Please recommend a complete cabinet to be tested to industry testing standards.



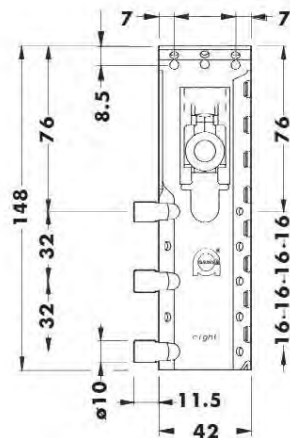
817 CONCEALED HANGING BRACKET

CAMAR

- Dowel mount, 3 dowels, 8mm
- Perfect for CNC machines
- Cover caps: 12mm OD. Hole 10mm
- 176 lbs. weight capacity per pair
- 100 per box.
- Adjustment: $\leftarrow 25 \text{ mm} \rightarrow$ $\updownarrow 18 \text{ mm}$



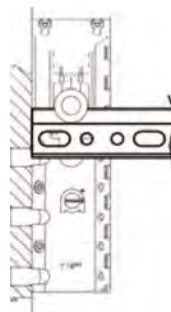
Description	Item Number (Left Mount)	Item Number (Right Mount)	Finish
817 Concealed Hanging Bracket	817-AU-SX	817-AU-DX	Steel
Cover Cap		810-12-01	White
Cover Cap		810-15-01	Grey
Cover Cap		810-75-01	Silver/Grey



816 CONCEALED CABINET BRACKET

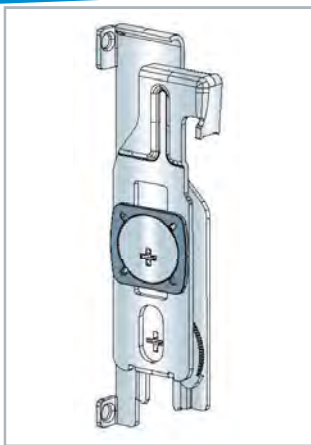
CAMAR

- Dowel or screw mount
- Cover caps available, 40 x 20mm Oval
- 286 lbs. weight capacity per pair
- 100 per box
- Adjustment: $\leftarrow 10 \text{ mm} \rightarrow$ $\updownarrow 12 \text{ mm}$

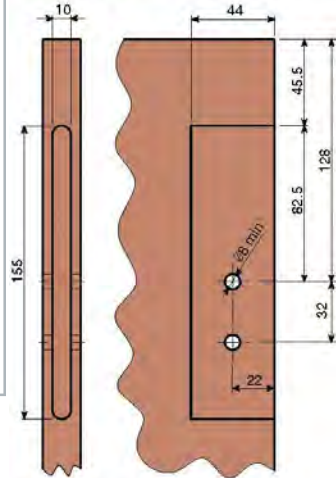


Description	Item Number (Left Mount)	Item Number (Right Mount)	Finish
816 Concealed Cabinet Bracket	816-DU-SX	816-DU-DX	Steel
Cover Cap 40x20mm Oval		810-00-01	White
Cover Cap 40x20mm Oval		810-00-02	Black
Cover Cap 40x20mm Oval		810-00-15	Grey
Cover Cap 40x20mm Oval		810-00-04	Brown
Cover Cap 40x20mm Oval		810-00-55	Almond

Invisible Shelf Support



Drilling of the side



TRASER 7 CONCEALED HANGING BRACKET

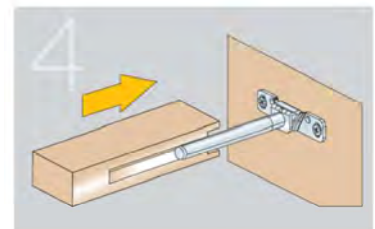
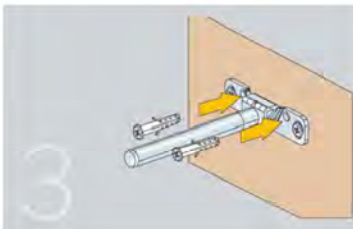
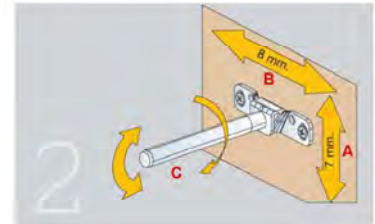
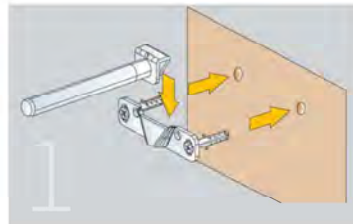
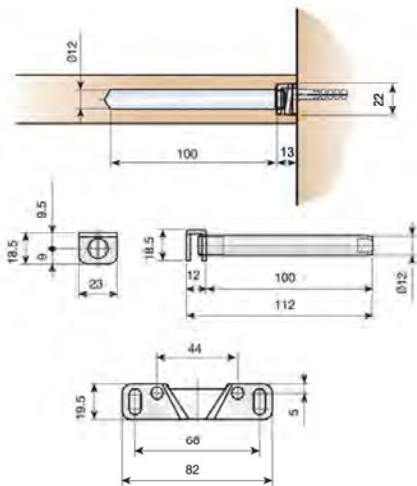
- Heavy-duty bracket
- Universal bracket
- Concealed in cabinet sides
- 286 lbs. weight capacity per pair
- 100 per box
- Adjustment **11 mm** **11.5 mm**

Description	Item Number	Finish
TRASER 7, Concealed Hanging Bracket	626.000.104	Zinc



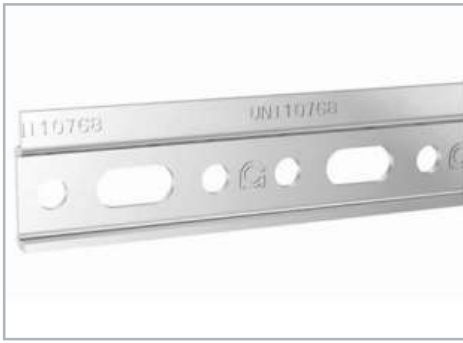
TENTI-8 INVISIBLE SHELF SUPPORT

- Completely concealed
- Able to hold heavy loads
- Allows the shelf to be adjusted in any direction
- Mounting hardware included in the polybag
- *8" Shelf depth max load is 17kg or 37.4lbs
- *12" Shelf depth max load is 11.5kg or 25.3 lbs
- 100 bags per box (also sold individually)



Description	Item Number	Finish
TENTI-8, Invisible Shelf Support	632.500.105	Steel

* The tests are achieved by 2 supports with a shelf length of 35". For every 18" additional shelf length, please add 1 additional shelf support.



White

Brown

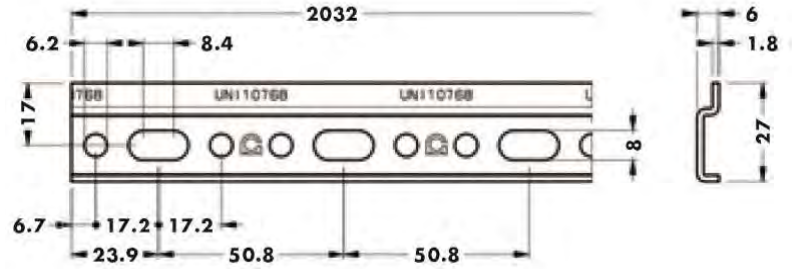


Almond

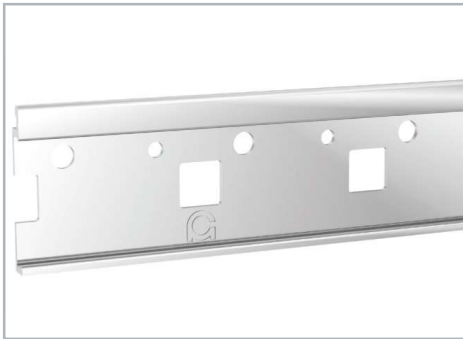
STEEL HANGING RAIL

CAMAR

- 1" wide x 8'2" long
- 15 Gauge
- 1" oval holes
- 10 per tube
- Can be shipped by UPS/FedEx



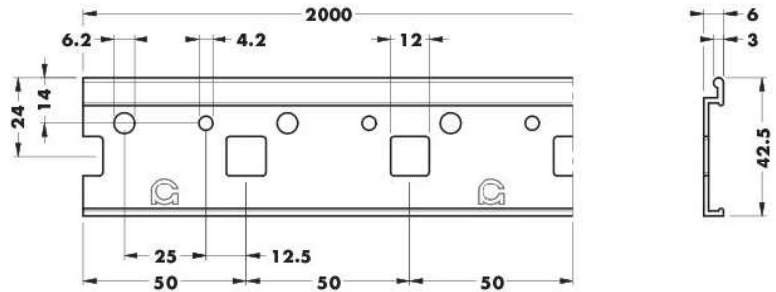
Description	Item Number	Finish
1" Steel Rail	875-Z1-24	Steel
Plastic Cover	883-01-24	White
Plastic Cover	883-04-24	Brown
Plastic Cover	883-55-24	Almond



ALUMINUM HANGING RAIL

CAMAR

- 2" wide x 8'2" long
- Easy field trim
- 30 per box
- Can be shipped by UPS/FedEx



Description	Item Number	Finish
2" Aluminum Rail	880-AL-01	Aluminum
Plastic Cover	881-01-01	White



CONTACT INFO

1255 South Park Dr.
Kernersville, NC 27284 USA

Tel. 336-996-7774
Fax 336-996-1812
Toll Free 800-222-6941

E-mail: info@petermeier.com
www.petermeier.com